

Application, cleaning and care of clipping heads

FOR ISIS, VEGA, EXACTA, AKKURATA AND BASECUT

Proper application, cleaning and care of the clipping heads is especially important for the trimmer in order to keep them ready for operation for a long time to come.

Isis and Exacta

The application areas for the Exacta and Isis are special parts such as paws and faces; Isis is also used for the preparation of biopsies. However, the machine is not suitable for completely shearing a dog. Neither the clipping head nor the motor are designed for this. Frequently asked questions:

The machine has not been in operation very long and now it no longer functions!

Then the machine is switched on without the clipping head. If it runs normally, then the clipping head is the cause of the problem. The machine has a safeguard mechanism and will not switch on if the cutting blades of the head are stuck together and can no longer move. This prevents the machine from „burning out“.

In 90 % of all cases, the problem is not with the machine, but with the clipping head. The clipping head is unscrewed to test this. This is done using the Allen key under the charging tray.



Therefore, proper care of the clipping head is extremely important.

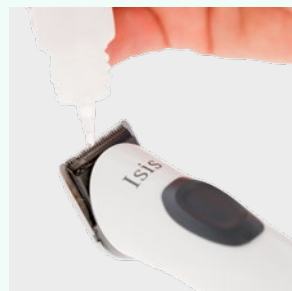


OILING BEFORE OPERATION

The clipping head must be oiled before each use. Use the supplied clipper oil for this purpose. Add a few drops of oil directly to the shearing blade. Then let the machine run for a few minutes so that the oil can distribute itself well and thus not be transferred to the hair of the animal.

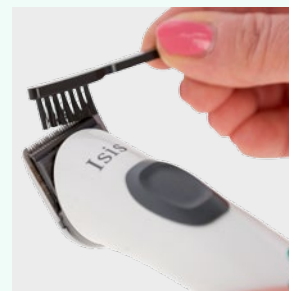
When using a disinfectant, the cutting head should be dried thoroughly to prevent corrosion. After drying, the clipping head must be oiled thoroughly.

OILING DURING OPERATION

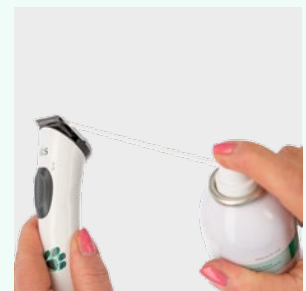


Repeat oiling every 5-10 minutes during operation. This prevents the clipping head becoming hot and being overloaded. It would then become duller sooner and then must be replaced sooner.

CLEANING AND CARE AFTER OPERATION



After operation when the machine is no longer required, the clipping head must be thoroughly cleaned. The hair and dirt is removed using a soft brush or soft toothbrush.



An oil spray with a small tube attachment is well suited for cleaning and oiling between the shearing blades. This creates more pressure and the dirt is blown out and the oil can be better distributed between the shearing blades.

Please never disassemble the clipping head - it can then no longer be used!

The clipping heads of the Isis/ Exacta, Vega/ Akkurata and BaseCut clipping heads cannot be re-sharpened. If the clipping head is dull or defective, then it must be replaced with a new one.

If these care instructions are ignored, then the clipping head will quickly become unusable and will look like the following when taken apart:



It can no longer be used and a new clipping head must be purchased.

The following should also be checked when there are other problems with the machine:

THE BATTERY NO LONGER CHARGES:

Please make sure that the contacts on the charger and on the machine are clean and dry. The contacts can be cleaned using alcohol or spirit using a moist cotton pad.

The machine may only be placed in the charger when the contacts are completely dry because there is a risk of leakage currents and the housing could become hot.

For the first time, the machine should be discharged until the motor stops. This should be repeated occasionally.

The red charging display always lights up when the charging current is flowing.

The Vega and Akkurata

The application areas of the Vega and Akkurata are small areas on dogs such as the neck, belly, head and face; the Vega is used for veterinary cuts. The machine is not designed to shear an entire dog or shear dogs whose coat is very dirty. Neither the clipping head nor the motor are designed for this. The care and oiling of the clipping heads is especially important in order to keep them ready for operation for a long time to come. Even in this case, if the machine will no longer run, you must also test it without the clipping head to determine the source of the problem. To do so, remove the clipping head from the machine by folding it back.

The other points related to oiling before and during operation, as well as for cleaning and care after operation are the same as those for Isis and Exacta. The Vega and Akkurata have a charging display. The number of illuminated segments indicates the battery charge level and/or when the machine must be recharged.

FEATURES:

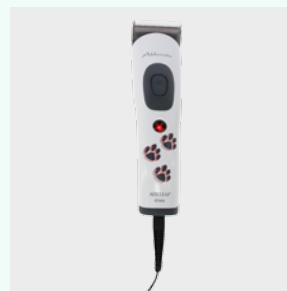
The cutting heights 0.5 mm, 1.5 mm and 2.5 mm can be set directly on the clipping head.

It can also be operated via cable because the plug for the charger also fits in the machine.

The Akkurata has a function lock for transport. This is released by placing the device into the connected charger. After approx. 5 seconds the machine is ready for operation.

Machines with a red charging display are equipped with a lithium ion battery.

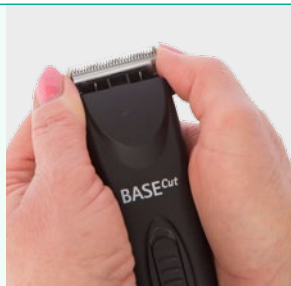
Machines with a blue charging display are older versions and are equipped with a nickel metal hydride battery.



BaseCut

The application areas of the BaseCut are similar to the Isis/Exacta and Vega/Akkurata.

The care instructions for the BaseCut are similar to those for the Vega/Akkurata.



AESCULAP® – a B. Braun brand

Albert Kerbl GmbH | Felizenzell 9 | 84428 Buchbach | Germany | clippers@kerbl.com | www.kerbl.com